

Column Type Compression Load Cell

Model : CC



Feature

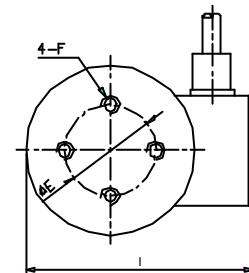
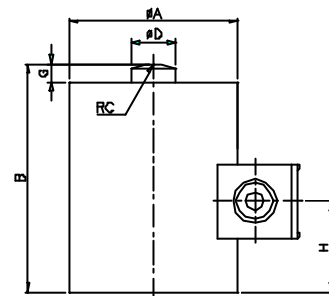
Model CC type loadcell achieves scale quality and performance standards. The model CC achieves 0.03% non-linearity with very little deflection. Model CC loadcells can be used in both static and dynamic applications. Suitable for all heavy weighing applications include rocket engine test, hopper, tank, bin weighing and weighing scales.

Specification

Accuracy				
Class	L-Class	G-Class	H-Class	S-Class
Nonlinearity[% FS]	0.2	0.1	0.05	0.03
Hysteresis[% FS]	0.2	0.1	0.05	0.03
Nonrepeatability[% RO]	0.02	0.02	0.02	0.02
Temperature				
Compensated Range[C]	-10 ~ 60			
Operating Range [C]	-30 ~ 80			
Effect on Zero[%RO/ C]	0.005			
Effect on Output[%/ C]	0.005			
Electrical				
Rated Output(Nominal)[mV/V]	2.0			
Excitation Voltage[VDC MAX]	10.0			
Bridge Resistance(Nominal)[Ohm]	350.0			
Zero Balance[% RO]	1.0			
Insulation Resistance[Megaohm]	2000			
Mechanical				
Safe Overload[% CAP.]	150			
Connector(Optional)				
Calibration	Compression			

Dimension

B-4



Load cell	Dimensions-mm										
	A	B	C	D	E	F	G	H	I	J	
Rated Capacity											
1 kN	84	109	30	19	60	M6 1.0 dp10	10	50	112	50	
2 kN	84	109	30	19	60	M6 1.0 dp10	10	50	112	50	
5 kN	93	125	70	25	50	M10 1.5 dp13	10	50	121	50	
10 kN	93	125	70	25	50	M10 1.5 dp13	10	50	121	50	
20 kN	93	125	90	25	50	M10 1.5 dp13	10	50	121	50	
50 kN	93	135	90	30	50	M12 1.75 dp16	10	50	121	50	
100 kN	94	142	140	38	70	M12 1.75 dp16	15	50	127	65	
200 kN	94	142	140	38	70	M12 1.75 dp16	15	50	127	65	
500 kN	114	165	130	58	80	M16 2 dp16	15	50	142	65	
1 MN	138	175	200	95	100	M16 2 dp18	15	50	166	65	
2 MN	138	135	200	95	100	M16 2 dp18	15	50	166	65	
5 MN	340	450	1000	130	240	M24 2.5 dp50	30	50	370	65	