

Model. PACT-5000
Max. Loading 5,000 kgf

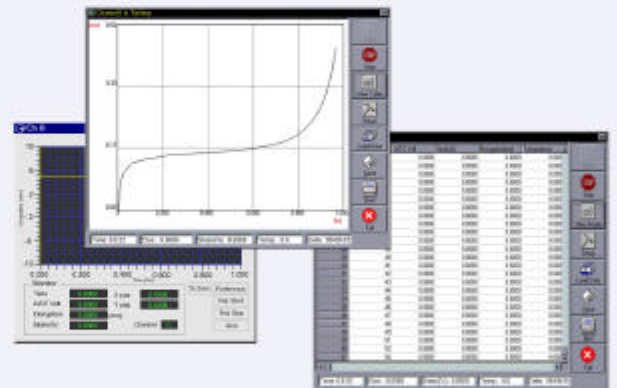
Advanced Functions

- Direct Loading by High Power Motor without Deadweights
- Precise Load Control using High Accuracy Load Cell
- Compact Size without Lever and Deadweights
- Programmable Load Control Possible for :
 - Cyclic Creep Test
 - Constant Load or Constant Stress Test
 - Thermo-Mechanical Fatigue (TMF) Test with Temperature Control (Option)
- Professional Software for Data Acquisition and Control

Dimensions

Mechanical Part (mm)	
Width	708
Depth	450
Height	2,060
Control Part (mm)	
Width	300
Depth	450
Height	900

Software



- Automatic Measuring and Recording
- Data Reduction for Efficient File Sizing
- Data Back-up and Emergency Recovery
- Graphic User Interface
- OS : Windows 95 / 98 / 2000 / NT
- Setting Control Parameters of DAQ System
- Maximum 16 M/C Simultaneously